

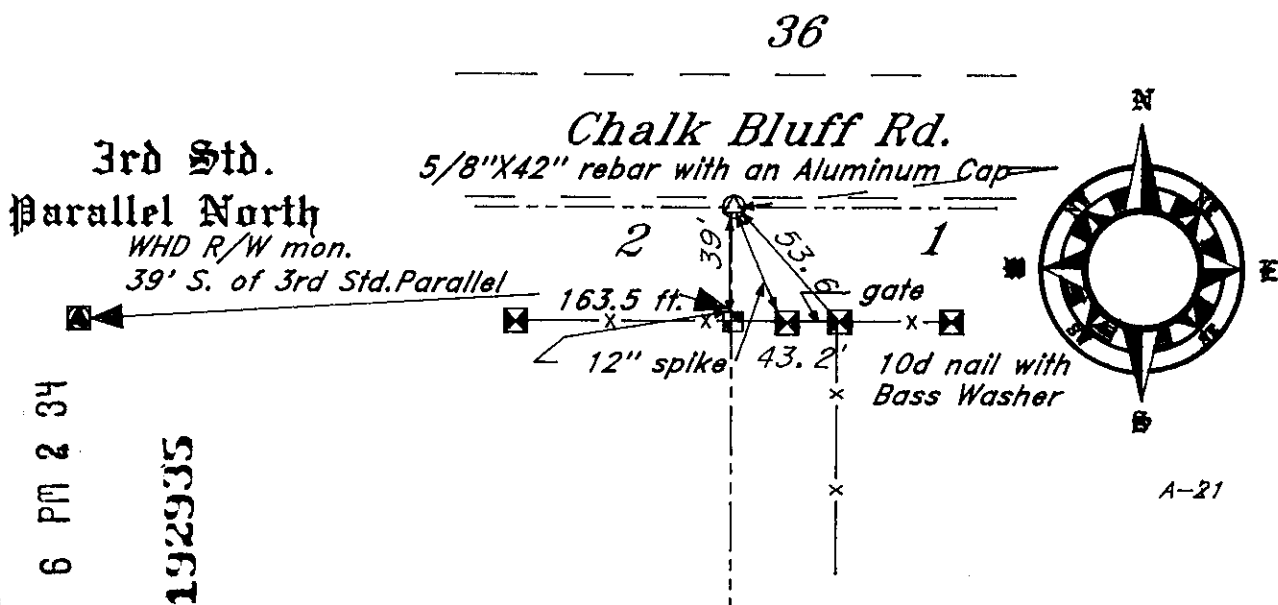
State of Wyoming Corner Record

(In compliance with the CORNER PERPETUATION AND FILING ACT, Wyoming Statutes, 1977, Section 36-11-101, et, seq., and the Rules and Regulations of the Board of Registration for Professional Engineers and Professional Land Surveyors)

Reverse side of this form may be used if more space is needed.

Record of original survey and citation of source of historical information (if corner is lost or obliterated). Description of corner monumentation evidence found and/or monument and accessories established to perpetuate the location of this corner. Sketch of relative location of monument, accessories, and reference points with course and distance to adjacent corner(s) (if determined in this survey). Method and rationale for reestablishment of lost or obliterated corner.

GLO: North between Section 1 & 2 80.16 chains intersect 3rd Std. 248 links East of Std Corner Section 95 & 96, set Sandstone 22"X11"X6". Found Std. corner East and West and WHD R/W mon. set at 39 feet South. Found ship spike set by the Laramie County Surveyor at 40 Feet South of the 3rd Std, Parallel for the construction of Chalk Bluff Rd. as W.C.



LARAMIE COUNTY CLERK  
CHEYENNE, WY.

66 NOV 6 PM 2 34

192935

Date of Field Work:

Office Reference:

CROSS INDEX DIAGRAM

Firm/Agency, Address

1	2	3	4	5	6	7	8	9	10	11	12	13	14	15	16	17	18	19	20	21	22	23	24	25	
A																									A
B																									B
C																									C
D																									D
E																									E
F																									F
G																									G
H																									H
J																									J
K																									K
L																									L
M																									M
N																									N
O																									O
P																									P
Q																									Q
R																									R
S																									S
T																									T
U																									U
V																									V
W																									W
X																									X
Y																									Y
Z																									Z
1	2	3	4	5	6	7	8	9	10	11	12	13	14	15	16	17	18	19	20	21	22	23	24	25	

Terrestrial Surveying & Mapping

P. O. Box 82

Cheyenne, WY 82003

Telephone Number: 307 634-9360

This corner record was prepared by me or under my direction and supervision.

SEAL & SIGNATURE



Corner Name: CC

Section: 211

T 12<sup>N</sup> R 66<sup>W</sup>

P.M. Cross-Index No.: A-21